



Harness the Power of the Sun

SILENT MESSENGER IV DYNAMIC MESSAGE SIGNS



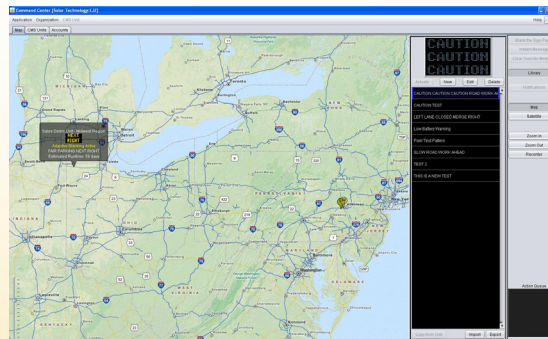
Powerful Control Technology
included with each unit:



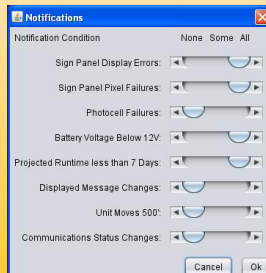
- Intuitive, 10.4" LCD touch-screen GUI.
- So easy to operate that no instructions are needed!
- Multi-lingual capability allowing use throughout the world.
- Message scheduler for date/time and event-based messages.
- NTCIP compatibility for fast, simple integration into standard ITS installations.
- Integrated GPS receiver.
- USB "thumb drive" interface for fast, easy software updates (via the SolarTech website), as well as data collection (with optional Radar).

Remote Control and Diagnostics (with Modem Option)

COMMAND CENTER Manage, Monitor and Segment your Fleet of Traffic Safety Equipment



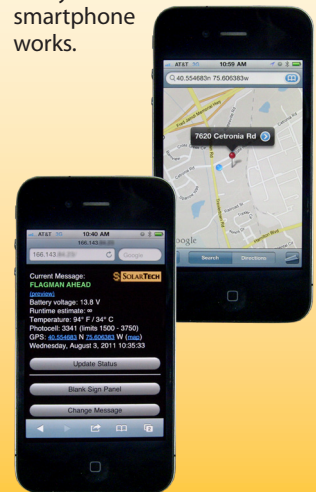
- GPS mapping of all units
- Group control and management of fleet
- Limit Liability - permanent log records what messages are displayed, and when
- Automatic notifications and alerts



- Be notified of message change, location change, low battery, etc.
- Improve worker and driver safety
- Make fewer trips to the site by using remote diagnostics
- Have less "down time"

SMARTPHONE CONTROL

- Full control of your message board from your smartphone.
- No software or apps required.
- Totally secure - IP Address, user name & password required.
- Messaging - system status, geo-location and diagnostics accessible from anywhere that your smartphone works.



SOLAR TECHNOLOGY, INC.
www.solartechtechnology.com

(800) 475-5442
(610) 391-8600 (outside US)

MESSAGE PANEL

Panel Size	60" wide x 30" high (152 cm x 76 cm) 78" wide x 30" high (198 cm x 76 cm) 60" wide x 33" high (198 cm x 84 cm)
Panel Construction	All aluminum, modular construction
Pixel Size	1.5" x 1.5" (38 mm x 38 mm) 0.75" x 0.75" (19 mm x 19 mm)
Matrix Size	16 x 36 pixels - 38 mm/60" x 30" panel 16 x 48 pixels - 38 mm/78" x 30" panel 18 x 48 pixels - 38 mm/78" x 33" panel 32 x 72 pixels - 19 mm/60" x 30" panel 32 x 96 pixels - 19 mm/78" x 30" panel
Characters per Line	9 max. for 38 mm/60" wide panel 12 max. for 38 mm/78" wide panel 18 max. for 19 mm/60" wide panel 24 max. for 19 mm/78" wide panel
Number of Lines	Up to: 2 for 38 mm or 4 for 19 mm
Number of Fonts	Twelve (12)
Character Height	7.5" to 24" (19 cm to 76 cm) - 38 mm 3.75" to 24" (10 cm to 76 cm) - 19 mm
Graphics Capability	Full matrix with animation
Display Technology	LED (amber, 592 nm)
Display Life Expectancy	10 years typical
Lifting Mechanism	1,000 lb. capacity winch & cable
Viewing Angle	23° horizontal (minimum)
Sign Panel Height (Operating)...	7 feet (214 cm) to bottom of sign panel

TRAILER

Length Overall	117" (298 cm) - towing 75" (191 cm) - deployed/storage
Width Overall	60" (152 cm) or 78" (198 cm)
Width Across Fenders	56" (142 cm)
Height Traveling	90" (229 cm)
Height Operating	129" (328 cm)
Ground Clearance	13" (33 cm)
Weight	1,100 lbs. (500 kg) approx. (maximum)
Coupler (Class III)	2" (50 mm) ball or 2-1/2" (64 mm) pintle ring
Axle/Suspension	Torq-Flex - independent

ENERGY SOURCE

Operating Voltage	12 volts DC (nominal)
Battery Type	6 volt heavy duty, deep cycle (GC-2)
Number of Batteries	Two (2) w/Auxiliary Battery Pack Four (4)
Battery Bank Capacity	260 amp hours w/Auxiliary Battery Pack 520 amp hours
Battery Status Indicator	Displays full-charge, normal and, low battery condition
Solar Array Construction	Top-mounted solar panels in aluminum frame
Solar Array Power Output	Standard - 80 watt (nominal) with upgrade
Solar Charge Controller	Automatic, temperature compensated
Auxiliary Automatic Battery Charger	45 Amp, 120 volt AC line-powered

MEGA-TECH CONTROL CONSOLE

Console Circuitry	Ultra-low power solid state
Console Touchscreen	Waterproof, backlit, full-color GUI, intuitive icon-driven, multi-lingual
Programming Software	Proprietary, field upgradable
Message Capacity	Pre-programmed and user- programmed- greater than 250 each
Time-Date Control	Real-time clock/calendar (365 day)
Message Display Time	User-selectable (0.1 to 99 seconds)
Display Update Time	Instantaneous
Non-Volatile Memory	512MB Compact Flash
Password Protection	User-selectable, multi-level
Operator Interface	Easy-to-use icons (no manual required)
Connectivity	Networkable (wired or wireless) and NTCIP compatible (Ethernet & RS-232)

OPTIONAL FEATURES AND UPGRADES

Battery Upgrades

- Four (4) lead acid (flooded) - 520 amp/hour capacity
- Two (2) gel cell or AGM: main. free, 260 amp/hour capacity
- Four (4) gel cell or AGM: main. free, 520 amp/hour capacity

Solar Array Upgrade

- 160 watt (nominal)

Remote Control Options

- Short range wireless - 802.11 WiFi
- Cellular Wireless - GPRS (CDMA/GSM) with GPS
- Solar Comm - secure, low cost GSM

Security Options

- Alarm, including GPS Locator/Recovery System
- Battery box metal lockdown frame

Radar Options

- Directional doppler K-Band. User-configurable KPH or MPH.
Data Collection and Statistical Analysis Package included.

OTHER SOLAR TECH PRODUCTS

SILENT SENTINEL

Trailer and Vehicle Mount Arrow Boards

SILENT MESSENGER

Full-Size Trailer-Mount Message Boards

SILENT MESSENGER II

Mid-Size Trailer and Vehicle Mount Message Boards

SILENT MESSENGER III

Small-Size Trailer and Vehicle Mount Message Boards

SILENT ADVISOR

Low and High-Speed Application Radar Speed Trailers

INCIDENT RESPONSE TRAILER

Work Zone Trailer with Cones and Barrels

SOLAR-POWERED PORTABLE TOWER TRAILER

Platform for Cameras, Sensors and/or Lighting

SOLARTRAK

Monitoring and GPS Tracking of Construction Equipment

All models meet or exceed the standards for Portable Changeable Message Signs as listed in the U.S. Federal Highway Administration (FHWA) Manual or Uniform Traffic Control Devices (MUTCD). Specifications subject to periodic updates as required without notice.



SOLAR TECHNOLOGY, INC.

7620 Cetronia Rd. Allentown, PA 18106

Phone: 800-475-5442 or 610-391-8600

www.solartechnology.com